



Superstition Spacemodeling Society

presents

2022



NAR Section 506

Big AZ Launch

at the Kofa Site, off Exit 53 of I-10, AZ
November 18th - 20th



Model Rockets ~ High Power Rockets ~ Clusters ~ Multi-Stage ~ Scale ~ Payloads ~
Rocket Gliders ~ Competition & Sport



- ✓ There will be raffle prizes on Saturday
- ✓ Camping available Friday & Saturday nights only

***** Pot Luck – Saturday night *****

Public is invited to attend and see what Model and High Power Rocketry is all about.

***** Admission for spectators is free *****

This will be a **NAR** sanctioned launch. All participants and visitors must abide by the NAR safety rules (model, high-power, rc-glider):

<http://www.nar.org/safety-information/>

Bring your Tripoli or NAR cards for registration.

Directions to Launch Site on the back.

Launch Windows:

Friday

setup-12pm

1pm-5pm

Class 1 only

(non-waivered)

Saturday

8:30am-12pm

1pm-5pm

Class 1 & 2

(waivered)

Sunday

8:30am-12pm

Class 1 & 2

(waivered)

Night launch will be confirmed 72hrs from launch date

Range Fees:

One day launch fees

\$15.00 per person \$10.00 for MARS / SARA / SSS members

\$30.00 for organized groups up to 10 and \$3.00 per head after 10

Two day launch fees

\$30.00 per person \$20.00 for MARS / SARA / SSS members

\$50.00 for organized groups up to 10 and \$5.00 per head after 10

Note: Under 18 fly free!

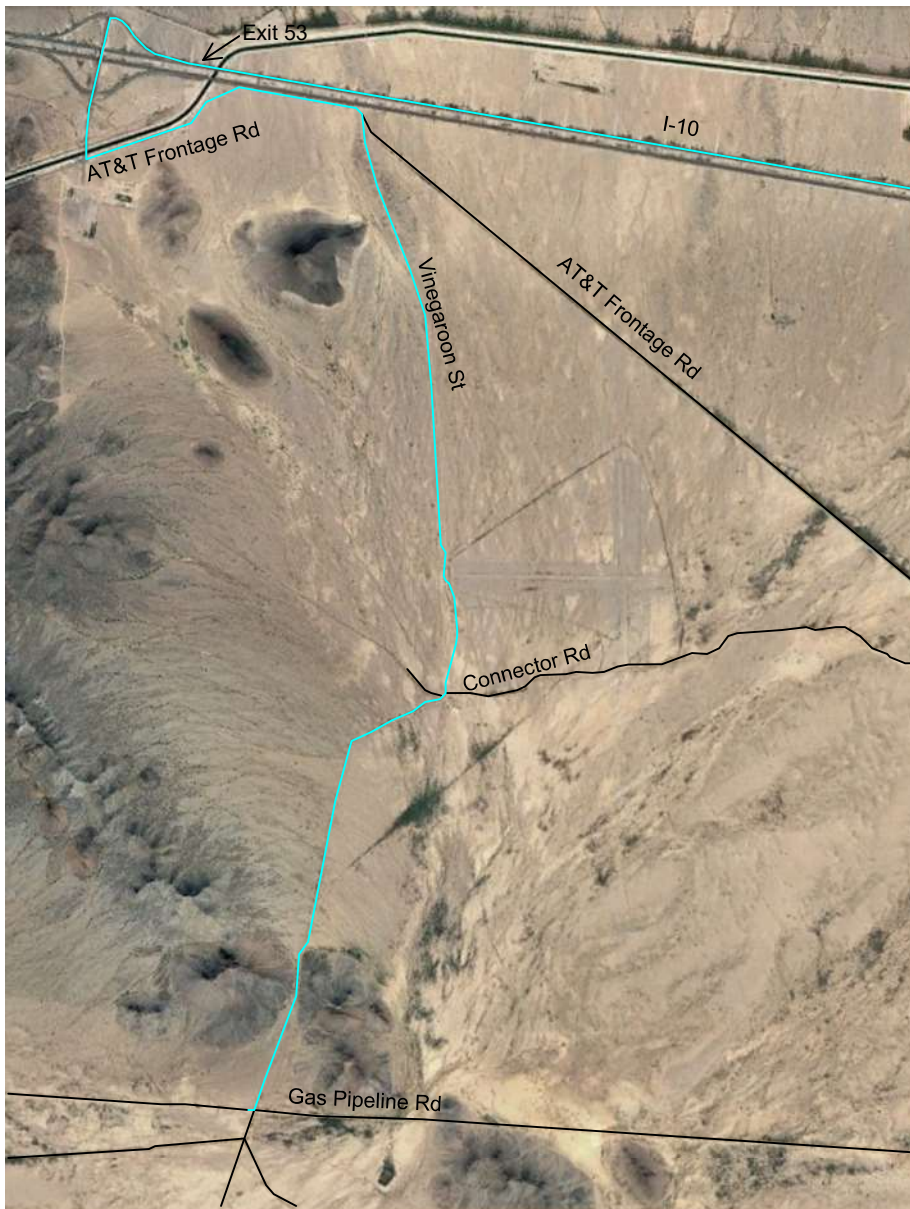
Rocketeers of all experience levels are welcome to join us.

NAR certifications available, FAA waiver for flights up to 14,500 ft AGL with call in windows to 16,000 ft AGL

Certified motors 1/8A to O, model, clustered and complex high power rockets may be flown

For more information visit us at:

www.sssrocketry.com



Kofa Site

Directions:

- Head west on I-10 W towards Exit 53
- Take Exit 53 for Hovatter Rd
- Turn left onto Harquahala Rd/Hovatter Rd
- Continue to follow Hovatter Rd
- Turn left onto AT&T Frontage Rd
- Continue to follow AT&T Frontage Rd
- Turn right onto Vinegaroon St
- Continue S on Vinegaroon St past Connector Rd
- Continue S to Gas Pipeline Rd

! NOTE !

This is BLM land. Please stick to paths and roads. Pick up all trash – Leave No Trace rules apply.

NO DUMPING!

